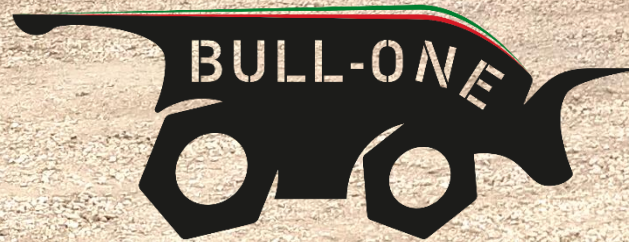


BELLAVISTA HC



Leafy Greens Harvesting & Handling

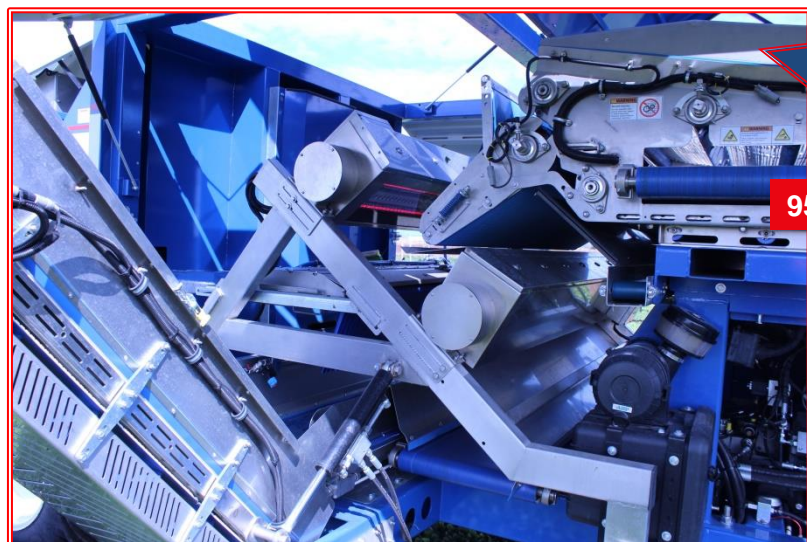
BELLA VISTA HC

The best harvesting efficiency that Bull-one presents comes from the new technologies associated with the well-known application quality. The new models are modern, robust, and bold. The new line stands out for the excellent driveability guaranteed by the central cabined guide, added to technologies such as the **Chlorophyll Optical Sorter**, Individual Hydraulic Devices Control, Variable Displacement Wheel motors and 4 Wheels Steering, ensuring more economic and comfortable harvesting duty.

RUGGED OPTICAL SORTER, BORN FOR AGRICULTURE

The Bellavista HC is equipped with a cutting edge high resolution [optical sorter](#) capable to examine the product using the "high speed double vision system" to analyse 100% of the surface of each object.

This rugged optical sorter, is used to sort directly on the harvester the delicate leafy greens, but even tomatoes, potatoes, onions and much more



8 t/h

17700 lbs/h
Adult and Teen leaves

95% sorting efficiency

3,5 t/h

7800 lbs/h
Baby leaves

95% sorting efficiency

BENEFITS COMPARED TO THE AIR JUMP SYSTEM

With the air jump, heavy foreign bodies can be easily removed, while light foreign bodies such as dry leaves, plastic film, dry wood, feathers are not intercepted because the system treats them like the leaves of the collected product.

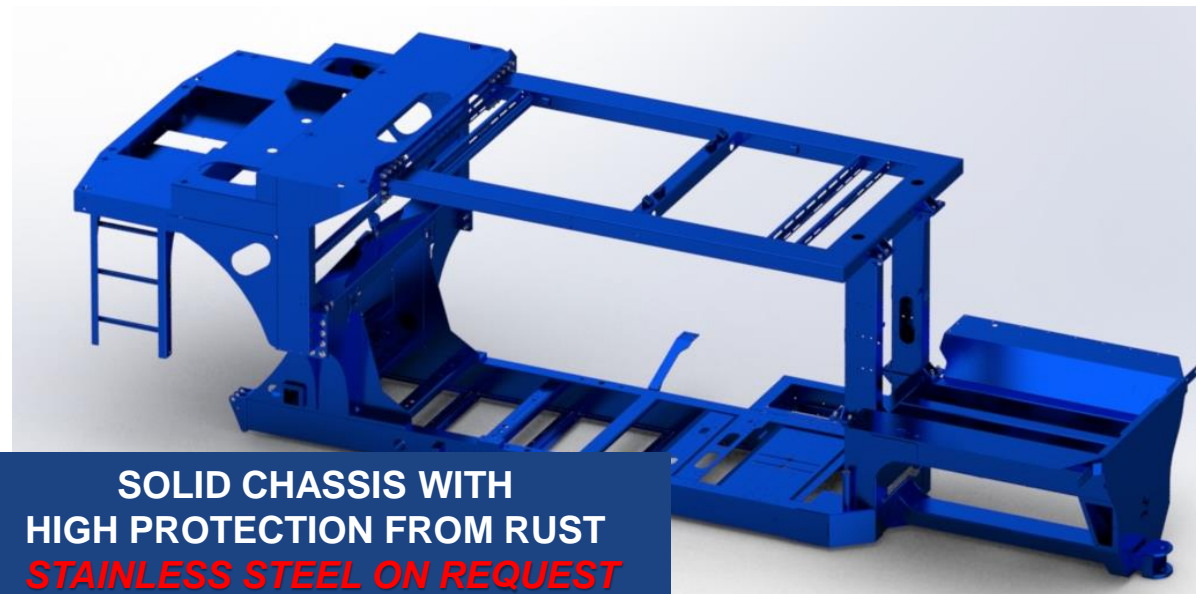
The optical sorter sees and intercepts the light foreign body in flight, diverting its trajectory and directing it in the waste area, away from the product that will end up in the containers that will be transferred to the processing plants, saving the line entry selection stage.

ADVANTAGES COMPARED TO THE SHAKER BELT

A good shaker belt must have generous dimensions, a great shaking power and a passage light of the foreign body lower than the size of the leaf that is being collected.

The purpose of the sieving stage is therefore to remove soil residues, cutting residues and possible small foreign bodies.

All the rest is entrusted to the next selection stage, where we find the optical sorter able to intercept in flight any foreign body with minimum dimensions of 1cmq!

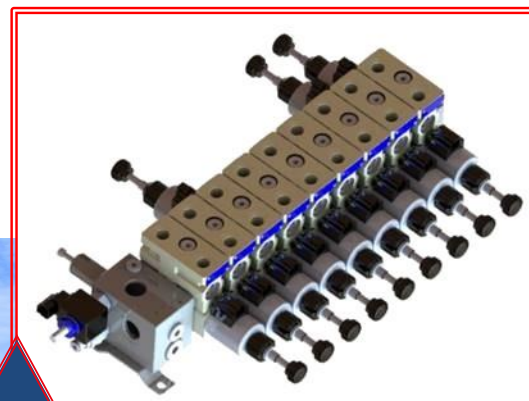


SOLID CHASSIS WITH HIGH PROTECTION FROM RUST STAINLESS STEEL ON REQUEST

- **S355 STEEL GRADE:** the strongest structural steel available on the market
- **CATAPHORESIS TREATMENT:** protect the frame from the rust outside and inside with the cataphoresis bath treatment
- **DOUBLE LAYER POWDER COATING:** the best chemical protection for the outside surfaces, choose your favorite color!

OPTIMIZED HYDRAULIC SYSTEM

Through the PWM Valve and the Load Sense plant the hydraulic system identifies the necessary oil amount to perform the activities, mainly the rotating devices flow. With this control, there is on average plus 8 hp, saving up to 2.5% on fuel.



2,5 %
Fuel saving

HI-RES CAMERA

With four IP67 rugged cameras, the operator can see at anytime:

- Cutting height sensors
- Sorter and shaker belt
- Discharge station
- Rear view



DEUTZ TCD 3.6 L4 – 134HP

The new Harvesters line is equipped with a Deutz TCD 3.6 L4 with 134 hp electronic engine, complying with the stage V - EPA legislation on the agricultural segment. The engine adjusts according to the harvesting needs, saving fuel and increasing lifespan. Besides, the engine has low pollutants emission, less noise and vibration.

STAGE 5
READY

BULL-ONE



SMART TRANSMISSION

With the 4x4 Rexroth transmission, the information is seen on the 12" touch screen display and the diagnoses happen in real time, through the Bull-one remote connection

CRUISE CONTROL

The system offers comfort and convenience to the operator. By pressing a single button on the joystick, the harvester speed is adjusted.

CRUISE CONTROL ECO

This electronic system, available only in transport mode, make the harvester able to run with the best hydraulic efficiency; maintaining the engine at only 1800rpm, with saving fuel and reducing the noise

WHEEL MOTORS

Wheel motors are with axial gears speed reducer which ensures higher application speed, torque and durability.

HYDRO ELECTRONIC TRANSMISSION 4X4



TRANSPORT MODE
UP TO 15 KM/H - 10 Mph



WORK MODE
UP TO 10 KM/H - 6 Mph



FOUR WHEELS STEERING MODE
UP TO 8 KM/H - 5 Mph

PARKING/SAFETY BRAKES

The autonomous parking brake, located on each individual wheel, let the operator to leave the harvester safe on any kind of terrain, even in case of engine, electric or hydraulic faults.

TRACTION CONTROL SYSTEM

The traction control is electronic and integrated. It allows real-time monitoring and instantaneous reaction. The controlling ensures better performance on rough and humid terrains

SMART 4-WHEEL STEERING SYSTEM

**UP TO 45% ON CROP DAMAGE
REDUCTION**

The smart 4-wheel steering and the automatic steering feedback allow turning radii 42% smaller than conventional systems, providing fast steering and reducing crop damage.

HIGHEST CLEARANCE ON THE MARKET 22" - 55cm minimum

Rexroth
Bosch Group



The Bellavista HC have 0,55-meter-height (22") clearance, and carriages available to 1,8mt to 2,2mt (70" to 87"). The application can be higher with bigger wheels, which allows 10 cm (4") increment on the clearance spacing. At this point, the crops are on advanced stage, guaranteeing more safety and productivity in the future cutting phases of the same crop.



NARROW TRACK CONVERSION KIT AVAILABLE - 300MM WIDE (12")

 **ZUIDBERG**



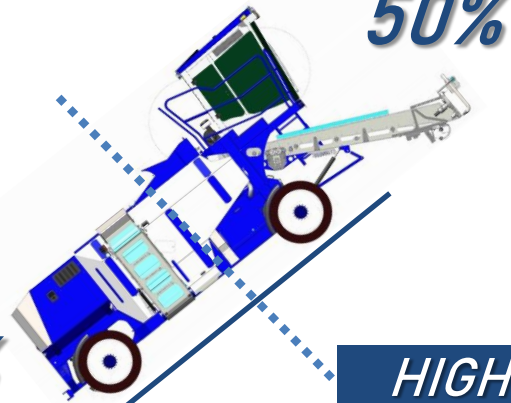
BULL-ONE



RAMP CAPACITY

With the highest ramp capacity on the market, the Bellavista HC line allows working on rough terrain, maintaining the machine stability

50%



50%

HIGHEST RAMP
CAPACITY
ON THE MARKET
39%

WEIGHT DISTRIBUTION

All the components are located in the harvester to make the weight distributed 50% on the front and 50% on the rear, further increasing its stability

TECHNOLOGY

12" DISPLAY

Complete Controller that gathers sorter and machine information into a single and modern device, with practical and straightforward access.



SMART ARMREST

All functions are easily recognizable on the new intelligent armrest, equipped with proportional controls and double display!



COMFORTABLE A/C CABIN

- ✓ MORE COMFORT
- ✓ MORE ERGONOMIC
- ✓ MORE VISIBILITY



PNEUMATIC SUSPENSION SEAT

Comfortable seat with pneumatic suspension for standard



AGRICULTURE 4.0



REMOTE CONNECTION

The new Bellavista HC is equipped with a device that allows communication between the machine and its technical support in order to get quick and effective remote assistance.



GPS POSITIONING

The new BELLAVISTA HC, is supplied for standard with a GPS positioning system which allows to detect the harvester monitoring the path on the field, even measuring the harvested area.



VR MAINTENANCE GLASSES

Thanks to smart glasses it is possible to get real-time remote assistance with our service. Our technicians can help you troubleshooting and prevent machine stop.



TELEMETRY – MACHINE DATA COLLECTION

You can see all the parameters of the machine over time, power, consumption, how all the rotating parts and valves has been used.

BULL-ONE



BELLA VISTA HC



CUTTING HEAD

Belt width	1400 ÷ 1800 mm (55" ÷ 75")
Belt material	Blue PVC double coated - FDA
Belt tensioning	With "omega" winding - blue FDA rubber traction roller
Blade pulleys	4 - FDA rubber
Cutting height sensors	2 - electronic - with adjustable height and width

SHAKER

Working length	1100 mm (43")
Width	1600 mm (63")
Chain speed	30 rpm ÷ 80 rpm
No. beaters	2
Beater speed	40 rpm ÷ 100 rpm
Standard metal mesh (triangular shape)	Width = 16 mm (19/32") Height = 22 mm (25/32")

OPTICAL SORTER

Manufacturer	Mate srl
Model	Field sorter
Ejection channels no.	70
Ejection channel size	25 mm (1")
Air consumption	170 NI/min (6 cfm)
Operating pressure	4 ÷ 6 Bar (60 ÷ 90 psi)

TRACTION - WHEEL TRACK

Manufacturer	Bosch Rexroth
Model	4RM - Electronic hydrostatic
Maximum working speed	8 Km/h (5 Mph)
Maximum transfer speed	15 km/h (10 Mph) - <i>electronic limitation</i>
Wheel track	1800 ÷ 2200 mm (70" ÷ 87")
Standard wheels (Front - Back)	10.00-20 - 10.00-20
Functions	Cruise control - Electronic anti-slip regulation

ENGINE

Manufacturer	DEUTZ ENGINE
Model	TCD 3.6 L4
Engine size / No. of cylinders	3600cc / 4 cylinders / Turbo common rail
Power	134 HP
Torque	500 Nm @ 1600 rpm
Accessories	CAN-BUS electronic control with Deutz ECU
Standard emissions	Tier 4 Final / Stage V – EPA

ELECTRICAL INFORMATION

Voltage	12V
Battery	180Ah
Generator	140Ah
Ecu	EPEC mod.5050 - CAN BUS
Human Machine Interface (HMI)	Smart armrest + IP66 display
Lights	LED lights

WEIGHT - DIMENSIONS - CAPACITY

Dimensions W x H x L	2900mm x 3700mm x 8800mm (9' 6" x 12' 1" x 28' 10")
Weight with oil and fuel tank empty (no cabin)	6750kg (14880 lbs)
Turning radius (with 2000 mm wheel track)	3700mm (145")
Fuel tank	140 LT (37 Gal)
AD-BLUE tank	10 LT (2,65 Gal)
Hydraulic oil tank	200 LT (53 Gal)
Complete hydraulic system	270 LT (71 Gal)
Hydraulic oil	Panolin ORCON SYNTH-E ISO VG46 NSF H1 + Biodegradable
Standard water tank	330 LT (87 Gal)

CONNECTION AND POSITIONING

Unit	EPEC 6200
Connection	GSM / UMTS / HSPA+ (LTE on request)
Positioning	GPS, GLONASS, BeiDou/Compass, Galileo, QZSS

Bull-one - Via Milite Ignoto 17/C – 45019 Taglio di Po (Rovigo) – Italy _ VAT: IT01628540294
Ph: +39 366 470 6676 – info@bull-one.com – www.bull-one.com



Leafy Greens Harvesting & Handling